

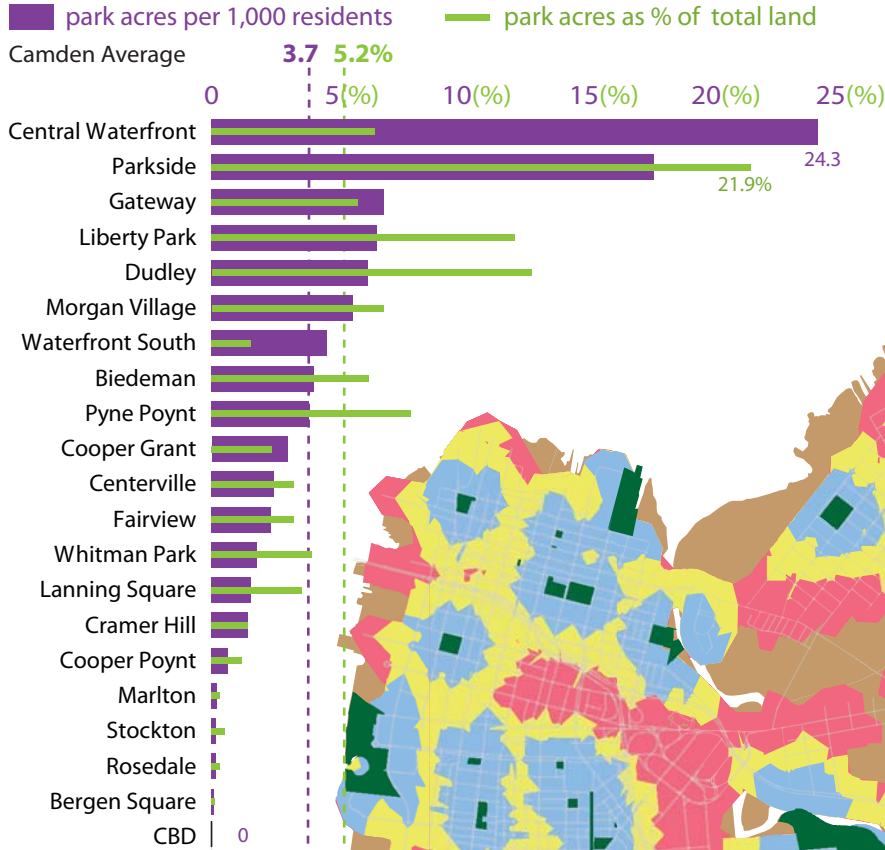
How Well is Camden Served by Open Space?

Fewer than 1/3rd of Camden residents live in easy walking distance to a usable park.

Overview: Parks are widely recognized by residents, planners, community health experts, and economic development specialists as key community assets. In many ways, public space *is* the infrastructure of community building. In the age of automobiles, when individuals are less likely than ever to walk, even for short distances, **parks less than 1/4 mile away** give the best chance that residents will actually receive the health and community-building benefits of accessible open space. Unlike many densely built cities across the country, Camden's stock of vacant land offers a unique opportunity to plan for a desirable future balance of park access and urban density. Cities at the forefront of urban park development, such as Seattle and Denver, plan for parks within an **1/8 mile** of every resident. New York City aims for 2.5 acres per 1,000 residents within **1/2 mile** of new construction.

A snapshot of Camden's current park accessibility appears below. The **parks** represent the extent of public space in Camden. If quality or condition of space, unwalkable roads, or pedestrian safety were taken into account, under-served areas (**red or brown**) would increase significantly.

Parkland in Camden Neighborhoods



City Comparisons

acres per 1,000 people

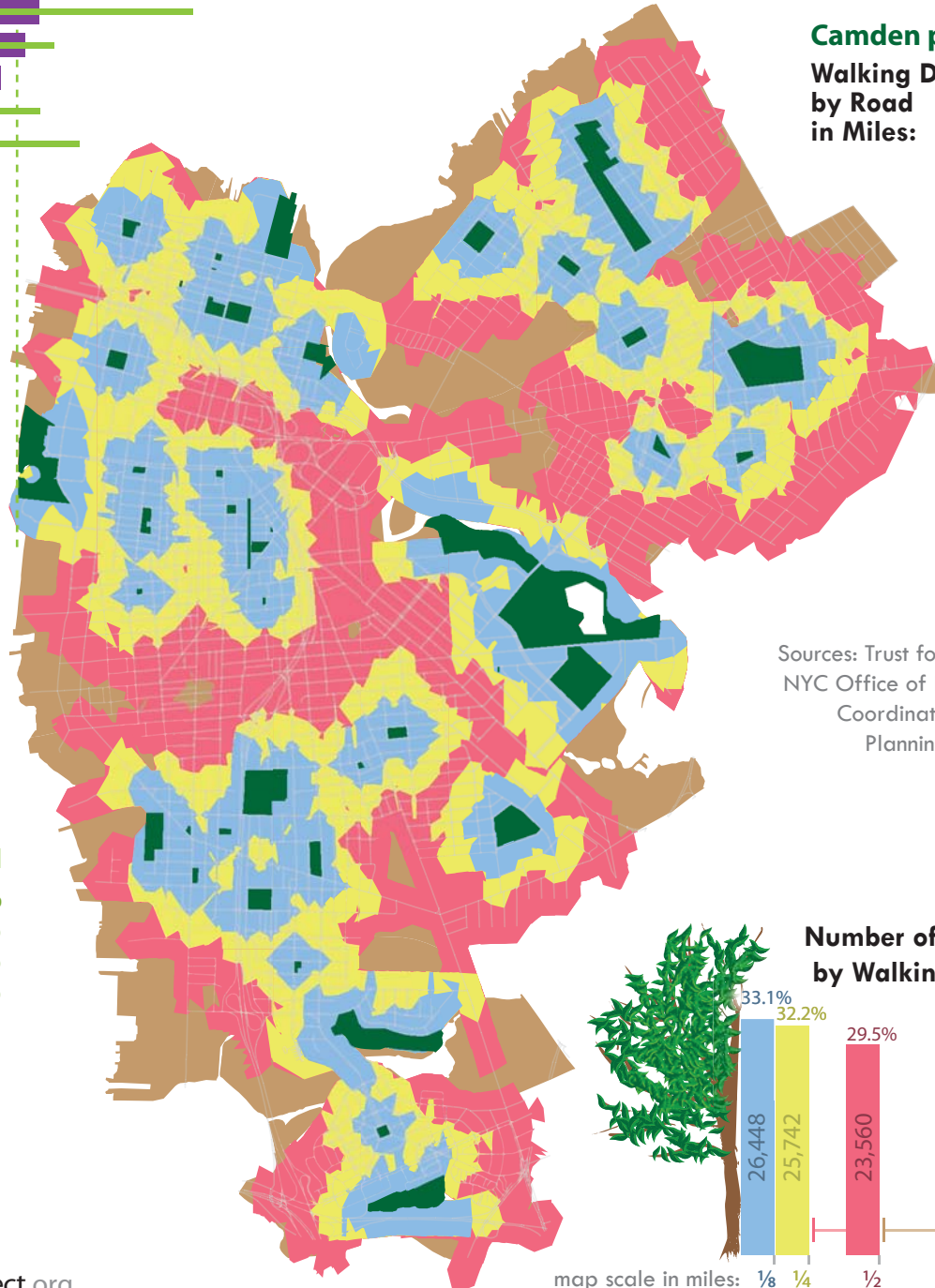
New York	19.6
Philadelphia	12.6
Newark	5.4
Camden	3.7

acres as % of total land

Washington	12.9%
Philadelphia	7.5%
Camden	5.2%
Newark	2.9%

Camden parks

Walking Distance by Road in Miles:



Sources: Trust for Public Land, NYC Office of Environmental Coordination, American Planning Association, CamConnect

Number of Residents by Walking Distance to a Park

