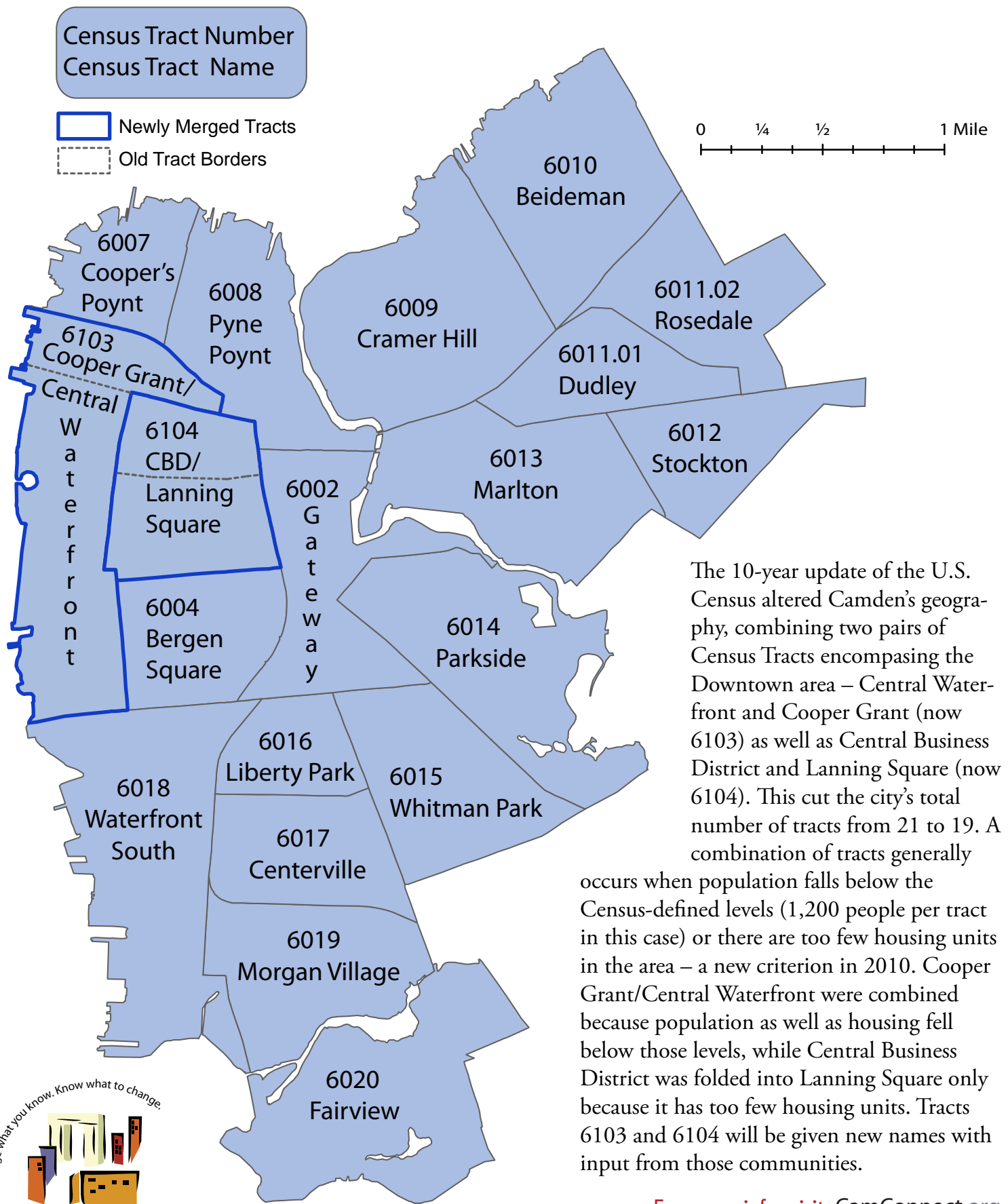
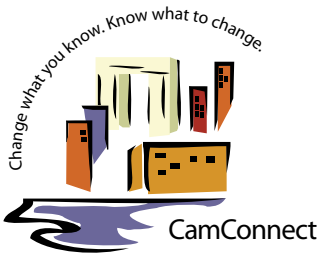


Camden Census Tracts – 10-Year Update



The 10-year update of the U.S. Census altered Camden's geography, combining two pairs of Census Tracts encompassing the Downtown area – Central Waterfront and Cooper Grant (now 6103) as well as Central Business District and Lanning Square (now 6104). This cut the city's total number of tracts from 21 to 19. A combination of tracts generally occurs when population falls below the Census-defined levels (1,200 people per tract in this case) or there are too few housing units in the area – a new criterion in 2010. Cooper Grant/Central Waterfront were combined because population as well as housing fell below those levels, while Central Business District was folded into Lanning Square only because it has too few housing units. Tracts 6103 and 6104 will be given new names with input from those communities.

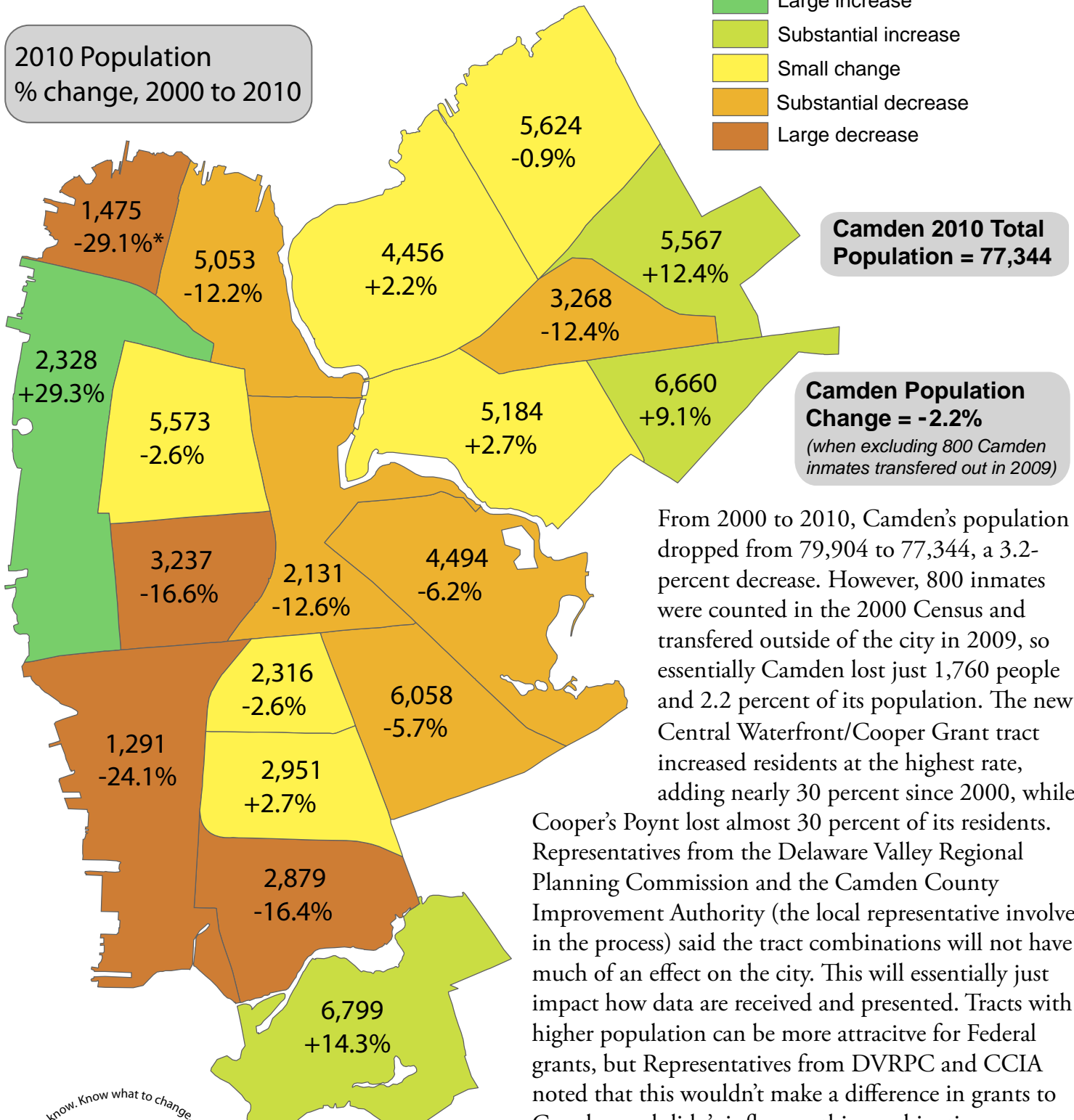


Camden Population Changes

Differences in Camden residents
by Census Tract, from 2000 to 2010

2010 Population
% change, 2000 to 2010

- Large increase
- Substantial increase
- Small change
- Substantial decrease
- Large decrease

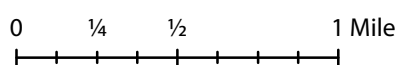
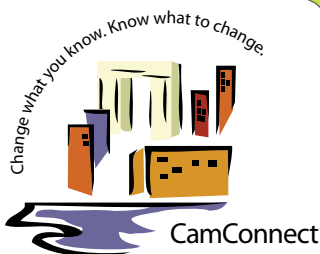


Camden 2010 Total Population = 77,344

Camden Population Change = -2.2%
(when excluding 800 Camden inmates transferred out in 2009)

From 2000 to 2010, Camden's population dropped from 79,904 to 77,344, a 3.2-percent decrease. However, 800 inmates were counted in the 2000 Census and transferred outside of the city in 2009, so essentially Camden lost just 1,760 people and 2.2 percent of its population. The new Central Waterfront/Cooper Grant tract increased residents at the highest rate, adding nearly 30 percent since 2000, while Cooper's Poynt lost almost 30 percent of its residents.

Representatives from the Delaware Valley Regional Planning Commission and the Camden County Improvement Authority (the local representative involved in the process) said the tract combinations will not have much of an effect on the city. This will essentially just impact how data are received and presented. Tracts with higher population can be more attractive for Federal grants, but Representatives from DVRPC and CCIA noted that this wouldn't make a difference in grants to Camden and didn't influence this combination.



*Figure subtracts inmates from 2000 population because they weren't counted in 2010.